



**RAYSTAR**

**曜凌光電股份有限公司**

Web: [www.raystar-optronics.com](http://www.raystar-optronics.com) E-mail: [sales@raystar-optronics.com](mailto:sales@raystar-optronics.com)

## **RFF700Y-AIW-DNS**

---

### **SPECIFICATION**

#### **General Specifications**

- Size: 7.0 inch
- Dot Matrix: 800 x RGB x 480(TFT)
- Module dimension: 165.0(W) x 100(H) x 7.0(D) mm
- Active area: 154.08 x 85.92 mm
- Dot pitch: 0.0642 x 0.179 mm
- LCD type: TFT, Normally White, Transmissive
- View Direction: 12 o'clock
- Gray Scale Inversion Direction: 6 o'clock
- Backlight Type: LED, Normally White
- With /Without TP: With RTP
- Surface: Anti-Glare

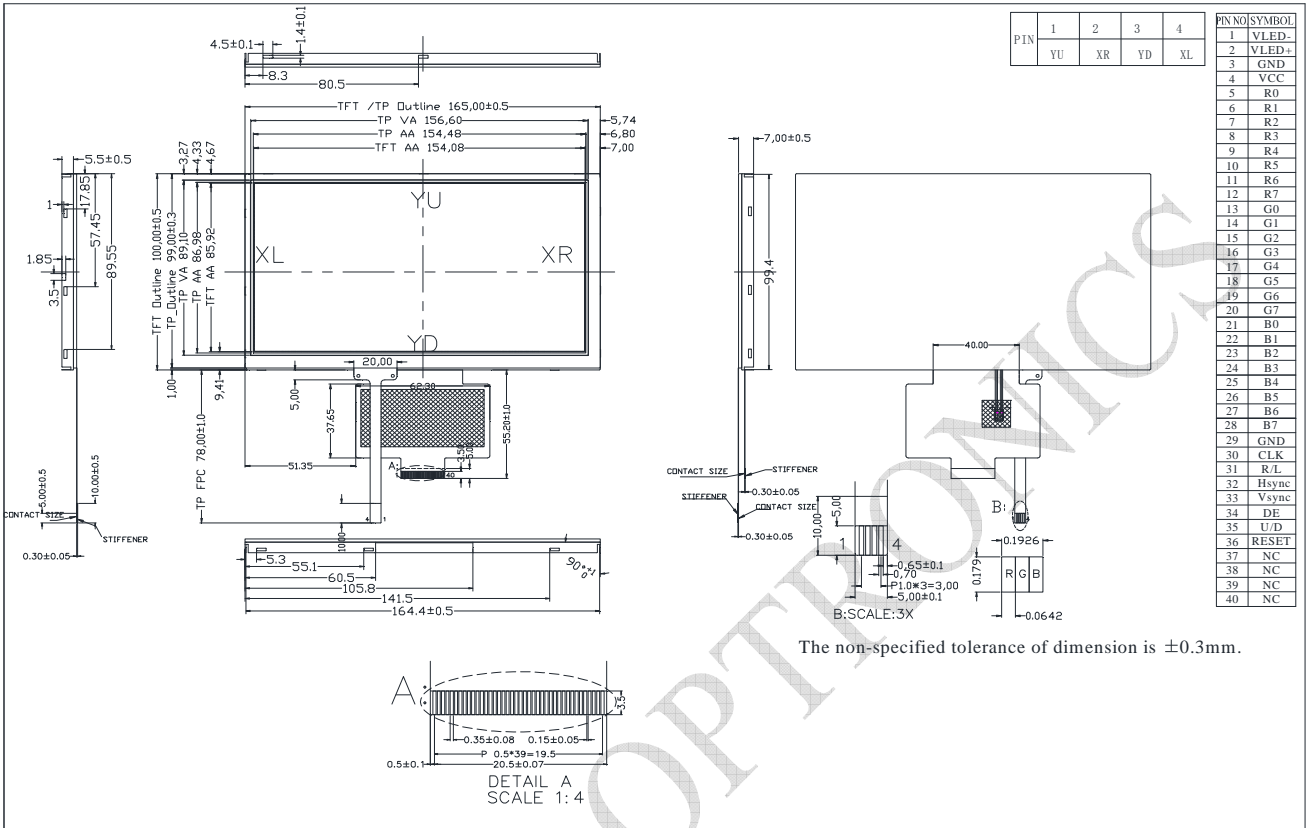
\*Color tone slight changed by temperature and driving voltage.

## Interface

### LCM PIN Definition

Pin	Symbol	Function
1	VLED-	Backlight ground
2	VLED+	Power supply for backlight
3	GND	Power ground
4	VCC	Power for Digital Circuit
5	R0	Red data(LSB)
6	R1	Red data
7	R2	Red data
8	R3	Red data
9	R4	Red data
10	R5	Red data
11	R6	Red data
12	R7	Red data(MSB)
13	G0	Green data(LSB)
14	G1	Green data
15	G2	Green data
16	G3	Green data
17	G4	Green data
18	G5	Green data
19	G6	Green data
20	G7	Green data(MSB)
21	B0	Blue data(LSB)
22	B1	Blue data
23	B2	Blue data
24	B3	Blue data
25	B4	Blue data
26	B5	Blue data
27	B6	Blue data
28	B7	Blue data(MSB)
29	GND	Power Ground
30	CLK	Sample clock
31	R/L	Right /Left selection ; Default R/L is Pull High
32	Hsync	Horizontal Sync Input
33	Vsync	Vertical Sync Input
34	NC	No connection
35	U/D	Up/down selection
36	RESET	Global reset pin.
37	NC	No connection
38	NC	No connection
39	NC	No connection
40	NC	No connection

# Contour Drawing



RAYSTAR OPTICAL

## Absolute Maximum Ratings

Item	Symbol	Min	Typ	Max	Unit
Operating Temperature	TOP	-20	—	+70	°C
Storage Temperature	TST	-30	—	+80	°C

## Electrical Characteristics

### Operating conditions:

Item	Symbol	Min	Typ	Max	Unit
Supply Voltage For Logic	VCC	3.0	3.3	3.6	V
Power Supply For Current	VCC =3.3V		110	165	mA

### LED driving conditions

Parameter	Symbol	Min	Typ	Max	Unit
LED current	-	-	180	-	mA
Power Consumption	-	1620	-	1890	mW
LED voltage	VLED+	9.0	-	10.5	V
LED Life Time	-	-	50,000	-	Hr