



RAYSTAR

曜凌光電股份有限公司

Web: www.raystar-optronics.com E-mail: sales@raystar-optronics.com

RFC350Y-AIW-DNN

SPECIFICATION

General Specifications

- Size: 3.5 inch
- Dot Matrix: 320 x RGB x 240(TFT) dots
- Module dimension: 76.9 x 63.9 x 3.26 mm
- Active area: 70.08 x 52.56 mm
- Dot pitch: 0.073 x 0.219 mm
- LCD type: TFT, Normally White, Transmissive
- View Direction: 12o'clock
- Gray Scale Inversion Direction: 6 o'clock
- Aspect Ratio: 4:3
- Backlight Type: LED ,Normally White
- With /Without TP: Without TP
- Surface: Anti-Glare

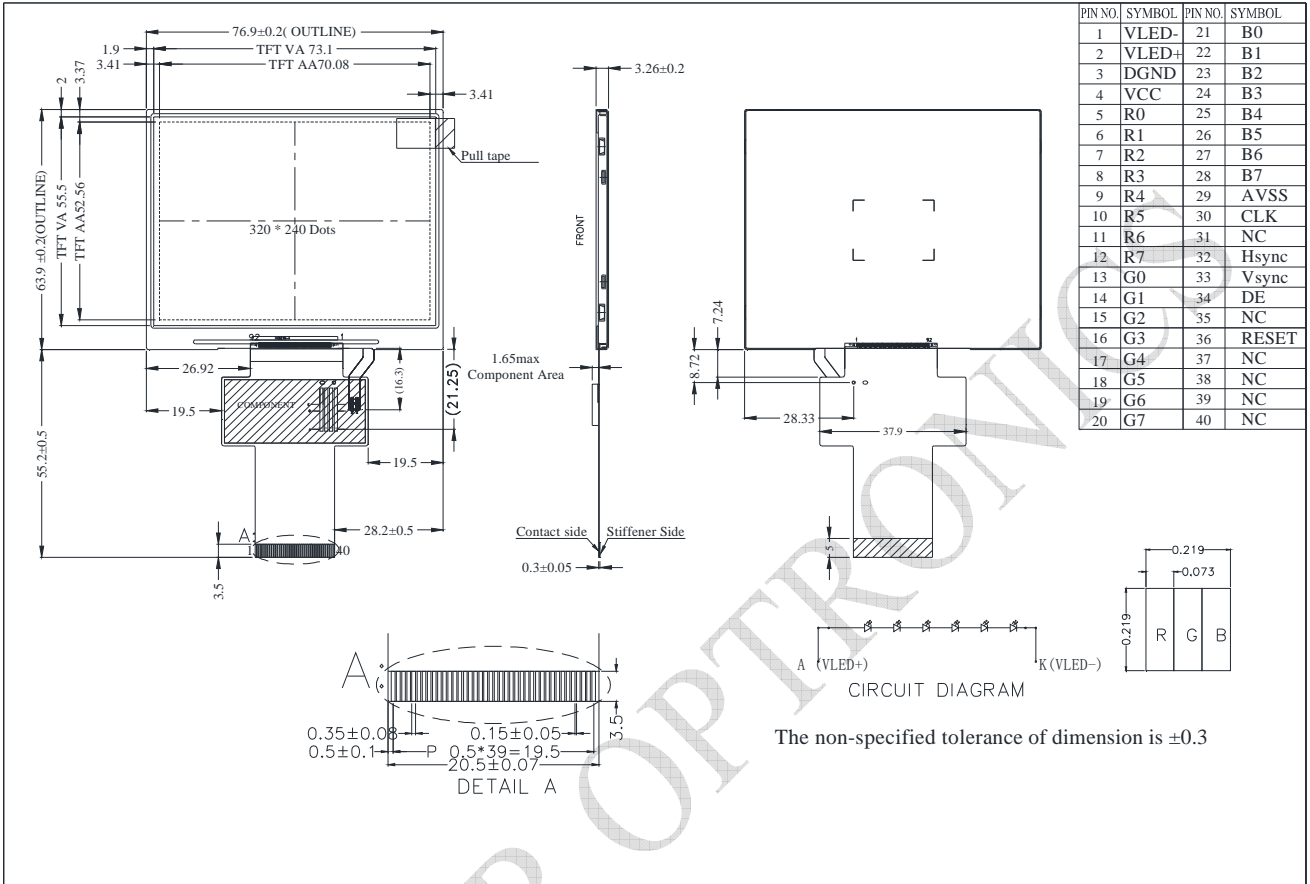
*Color tone slight changed by temperature and driving voltage.

Interface

LCM PIN Definition

Pin	Symbol	Function
1	VLED-	Power for LED backlight cathode
2	VLED+	Power for LED backlight anode
3	DGND	System ground pin of the IC. Connect to system ground.
4	VCC	Power Supply
5	R0	Red Data bit(LSB)
6	R1	Red Data bit
7	R2	Red Data bit
8	R3	Red Data bit
9	R4	Red Data bit
10	R5	Red Data bit
11	R6	Red Data bit
12	R7	Red Data bit (MSB)
13	G0	Green Data bit(LSB)
14	G1	Green Data bit
15	G2	Green Data bit
16	G3	Green Data bit
17	G4	Green Data bit
18	G5	Green Data bit
19	G6	Green Data bit
20	G7	Green Data bit (MSB)
21	B0	Blue Data bit(LSB)
22	B1	Blue Data bit
23	B2	Blue Data bit
24	B3	Blue Data bit
25	B4	Blue Data bit
26	B5	Blue Data bit
27	B6	Blue Data bit
28	B7	Blue Data bit (MSB)
29	AVSS	Grounding for analog circuit Connect to system ground
30	CLK	Dot-clock signal and oscillator source
31	NC	No connect
32	HSYNC	Horizontal sync signal
33	VSYNC	Vertical sync signal
34	DE	Data Enable signal
35	NC	No connect
36	RESET	Hardware reset
37	NC	No connect
38	NC	No connect
39	NC	No connect
40	NC	No connect

Contour Drawing



The non-specified tolerance of dimension is ± 0.3

RAYSTAR OPTRONICS

Absolute Maximum Ratings

Item	Symbol	Min	Typ	Max	Unit
Operating Temperature	TOP	-20	—	+70	°C
Storage Temperature	TST	-30	—	+80	°C

Electrical Characteristics

Operating conditions

Item	Symbol	Condition	Min	Typ	Max	Unit
Supply Voltage For LCM	VCC	—	3.0	3.3	3.6	V
Supply Current For LCM	ICC	—	—	12	18	mA

LED driving conditions

Parameter	Symbol	Min	Typ	Max	Unit
LED current		—	20	—	mA
Power Consumption		348	384	408	mW
LED voltage	LED+	17.4	19.2	20.4	V
LED Life Time		—	50,000	—	Hr