



FLAT DISPLAY TECHNOLOGY



This product is RoHS compliant

§ BRIEF SPECIFICATION §

FDT Tech Module No: **LOF121X05x-00R**

Description: **12.1" Digital TFT-LCD Module**

SPEC No.: **SAS-1509002**

Version: **1.0**

Issue Date: **February 17, 2020**

※ This specification contains 5 pages including the cover and appendix.



Features

- 12.1" (1024x768) Digital TFT LCD
- Aspect Ratio: 4:3
- Input Signal VGA / DVI-D/ HDMI 1.3a
- Maximum Support Resolution 1920x1080
- Stereo Audio Amplifier, Output 2W@4Ω Speaker
- Audio Line-In
- 5 Wires Resistive Touch Panel
- 5 Key Buttons Control
- 8 Language OSD Menu
- LED Backlight
- Single Operation Voltage +12V

Applications

- Industrial
- Medical Environment
- Instrument Display
- Kiosk
- Security
- Signage
- Office Electronics
- Home Application
- Educate Application



Specifications

LCD	
Panel Size	12.1"
Resolution (Pixels)	1024x768
Color	16.2M
Luminance without RTP	500 cd/m ²
Luminance (RTP)	400 cd/m ²
Contrast Ratio	700
Viewing Angle	80(L) / 80(R) / 70(T) / 70(B)
LED Life Time	30K (Min)
Power Requirement	
Power Input (DC Jack 2.1 φ)	+12 V _{DC}
PowerConsumption@+12V	10.1Watts (@Without Amplifier)
Touch Screen	
Resistive Type	USB / RS232 Interface
Resistive Type Support OS	Windows / Linux / DOS / Mac / QNX

Input Signal			
VGA	D-Sub15		
DVI	DVI-D		
HDMI	1.3a		
Audio			
Amplifier	1W@8Ω / 2W@4Ω		
Line-In	Stereo Input Phone Jack φ 3.5		
Controls			
Key	5 Buttons		
Serial Remote Control	RS232 (Option)		
Mechanical			
Mounting Type	Panel / VESA 100 x 100 Mount		
Environment			
Temperature Range	Without RTP	5W RTP	
	Operating	-20 ~ +70°C	-10 ~ +70°C
	Storage	-30 ~ +80°C	-30 ~ +80°C
High Temperature & High Humidity (Non-condensing)	Operating	40°C 90%	40°C 90%

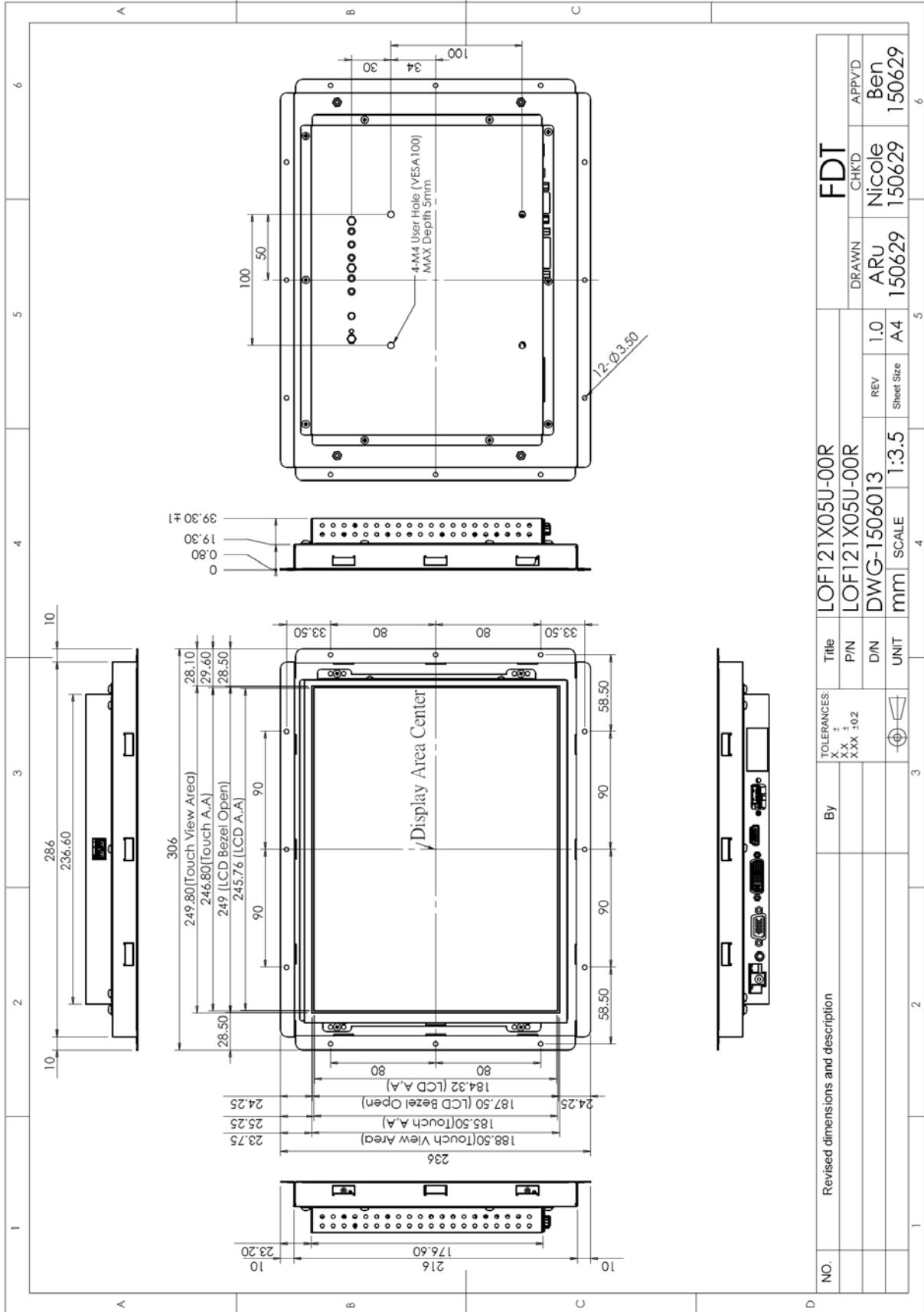
Order Information

Item	LOF121X050-00R	LOF121X05U-00R	LOF121X05R-00R
VGA	⊙	⊙	⊙
DVI	⊙	⊙	⊙
HDMI	⊙	⊙	⊙
Touch Panel Type	-	5W Resistive	5W Resistive
Touch Screen Interface	-	USB	RS232
Audio Amplifier	⊙	⊙	⊙
Audio Line-In	⊙	⊙	⊙
5 Keys	⊙	⊙	⊙
Condition	Standard	Standard	Non-standard

Item	Condition
Ear Phone	
RS232 Remote Control	Customized
Light Sensor	

Note: Special order condition will apply to non-standard items and pls contact salespersons in FDT.

Dimension



Accessories (Option)

Before you begin installing the Open Frame, please make sure that the following materials have been shipped:



- A. AC to DC Adapter (L:1500mm,100-240V_{AC} 50-60Hz to +12V_{DC} @ 3.3A, ϕ 2.1)
- B. Power Cord (L:1800mm, Plug Type B for USA)
- C. HDMI Cable (L:1800mm)
- D. DVI Cable (L:1800mm)
- E. VGA Cable (L:1800mm)
- F. USB Cable (L:1800mm)
- G. RS232 Cable (L:1800mm, Null Modem)
- H. AUDIO Cable (L:1800mm)
- I. Touch Screen Driver CD Disk / User Manual
- J. Speaker (2.5W @ 4 Ω L:400mm *2 Pieces)
- K. Mount Clamp and Screw *12 Pieces