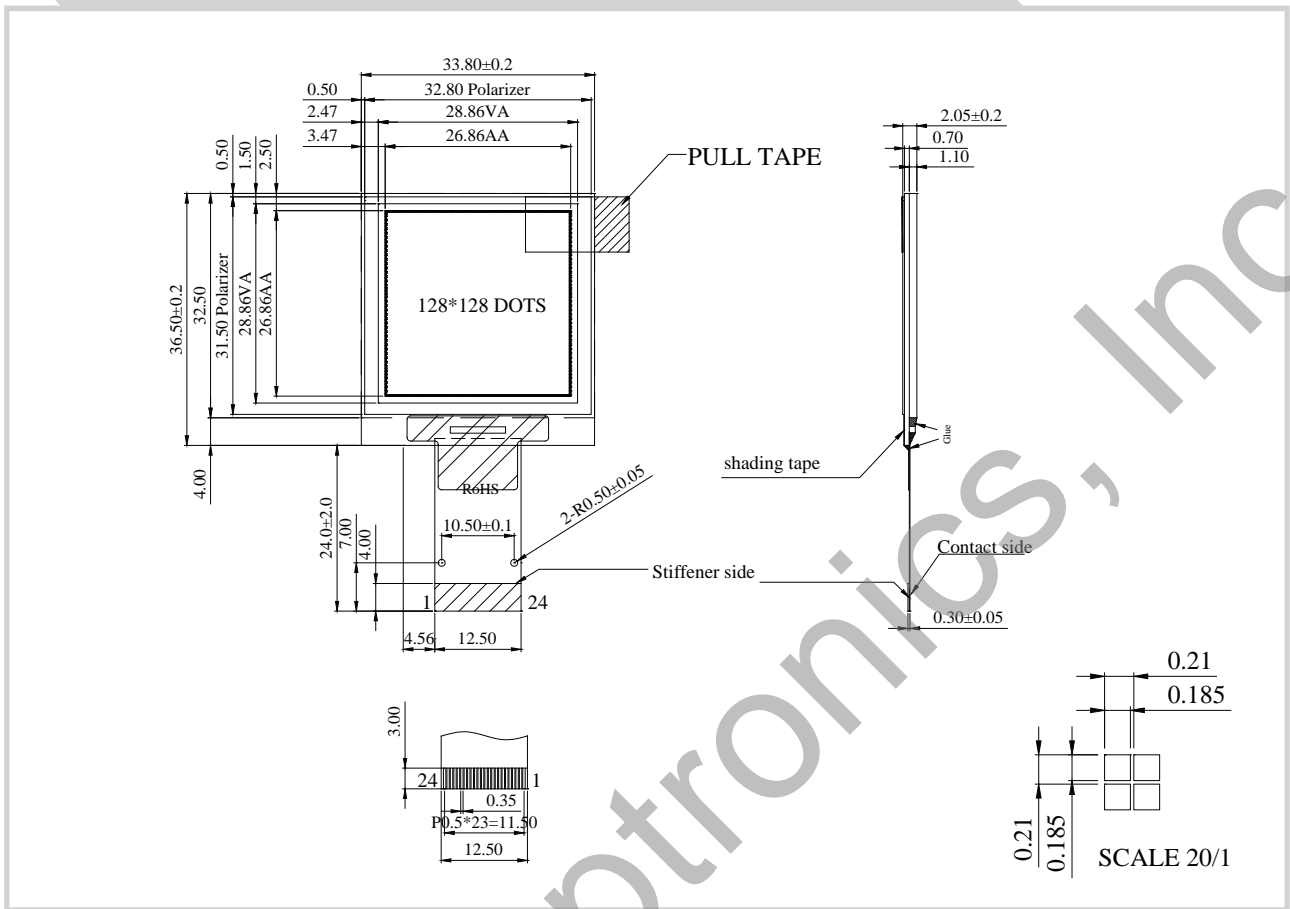


REX0128128A OLED Graphic 128x128 dots



Feature

1. 128*128 Dot Matrix
2. Built-in controller SSD1327ZB
3. +3V Power supply
4. 1/128 duty
5. Interface: 6800 ,8080 , SPI , I2C
6. Polarizer optional

| Pin No. | Symbol | Description |
|---------|--------|------------------------------|
| 1 | VSS | Ground Pin |
| 2 | VCC | Panel driving voltage |
| 3 | VCOMH | COM deselected level |
| 4 | VCI | Low voltage power supply |
| 5 | VDD | Voltage for logic |
| 6 | BS1 | Interface selection |
| 7 | BS2 | Interface selection |
| 8 | VSS | Ground Pin |
| 9 | IREF | SEG output current refer pin |
| 10 | CS# | Chip Select Pin |
| 11 | RES# | Reset Signal Pin |
| 12 | D/C# | Data/Command Control Pin |
| 13 | W/R# | Write Control |
| 14 | RD# | Read Control Signal |
| 15~22 | D0~D7 | Data BUS |
| 23 | VCC | Panel driving voltage |
| 24 | NC | No Connection |

Mechanical Data

| Item | Standard Value | Unit |
|------------------|----------------|------|
| Module Dimension | 33.8 x 36.50 | mm |
| Viewing Area | 28.86 x 28.86 | mm |
| Active Area | 26.86 x 26.86 | mm |
| Dot Pitch | 0.21 x 0.21 | mm |
| Dot Size | 0.185 x 0.185 | mm |

Electrical Characteristics

| Item | Symbol | Condition | Standard Value | | | Unit |
|---------------|--------|-----------|----------------|------|------|------|
| | | | min. | typ. | max. | |
| Input Voltage | VCI | --- | 2.8 | 3.0 | 3.3 | V |