



FLAT DISPLAY TECHNOLOGY



This product is RoHS compliant

## § BRIEF SPECIFICATION §

---

FDT Tech Module No: **LOF150XxxP-x0R**

---

Description: **15" Digital TFT-LCD Module**

---

SPEC No.: **SAS-1410002**

---

Version: **1.2**

---

Issue Date: **February 24, 2021**

---

※ This specification contains 7 pages including the cover and appendix.



## Features

- Full Flat Panel Design
- 15" (1024x768) Digital TFT LCD
- Aspect Ratio: 4:3
- Input Signal VGA / DVI-D/ HDMI 1.3a
- Maximum Support Resolution 1920x1080
- Stereo Audio Amplifier, Output 2W@4Ω Speaker
- Audio Line-In
- 2 Points Projected Capacitive Touch
- 5 Key Buttons Control
- 9 Language OSD Menu
- LED Backlight
- Single Operation Voltage +12V

## Applications

- Industrial
- Medical Environment
- Instrument Display
- Kiosk
- Security
- Signage
- Office Electronics
- Home Application
- Educate Application



## Specifications

| LCD                                   |                                 |
|---------------------------------------|---------------------------------|
| Panel Size                            | 15"                             |
| Resolution (Pixels)                   | 1024x768                        |
| Color                                 | 16.7M                           |
| Luminance w/o TP                      | 500 cd/m <sup>2</sup>           |
| Luminance (PCT)                       | 425 cd/m <sup>2</sup>           |
| Contrast Ratio                        | 2500                            |
| View Angle                            | 88(L) / 88(R) / 88(T) / 88(B)   |
| LED Life Time (Typ.)                  | 70K hours                       |
| Power Requirement                     |                                 |
| Power Input (DC Jack 2.1 ϕ)           | +12 Vbc                         |
| Power Consumption@+12V                | 12.3 Watts (@Without Amplifier) |
| Touch Screen                          |                                 |
| Projected Capacitive Touch            | USB Interface ( 2 Points )      |
| Projected Capacitive Touch Support OS | Windows / Linux                 |

| Input Signal                                      |   |
|---|---|
| VGA   | D-Sub15   |
| DVI   | DVI-D   |
| HDMI  | 1.3a  |
| Audio   |   |
| Amplifier   | 1W@8Ω / 2W@4Ω   |
| Line-In   | Stereo Input Phone Jack ϕ 3.5   |
| Controls  |   |
| Key   | 5 Buttons   |
| Serial Remote Control                             | RS232 (Option)  |
| Mechanical  |   |
| Construction                                      | Aluminum Front Bezel with Completely Covered Glass and SECC steel chassis |
| Mounting Type                                     | Panel / VESA 100 x 100 Mount  |
| Environment                                       |   |
| Operating Temp. PCT                               | -20 ~ +70°C   |
| Storage Temp. PCT                                 | -20 ~ +70°C   |
| High Temperature & High Humidity (Non-condensing) | +40°C / 90%   |

## Order Information

### ■ Unit

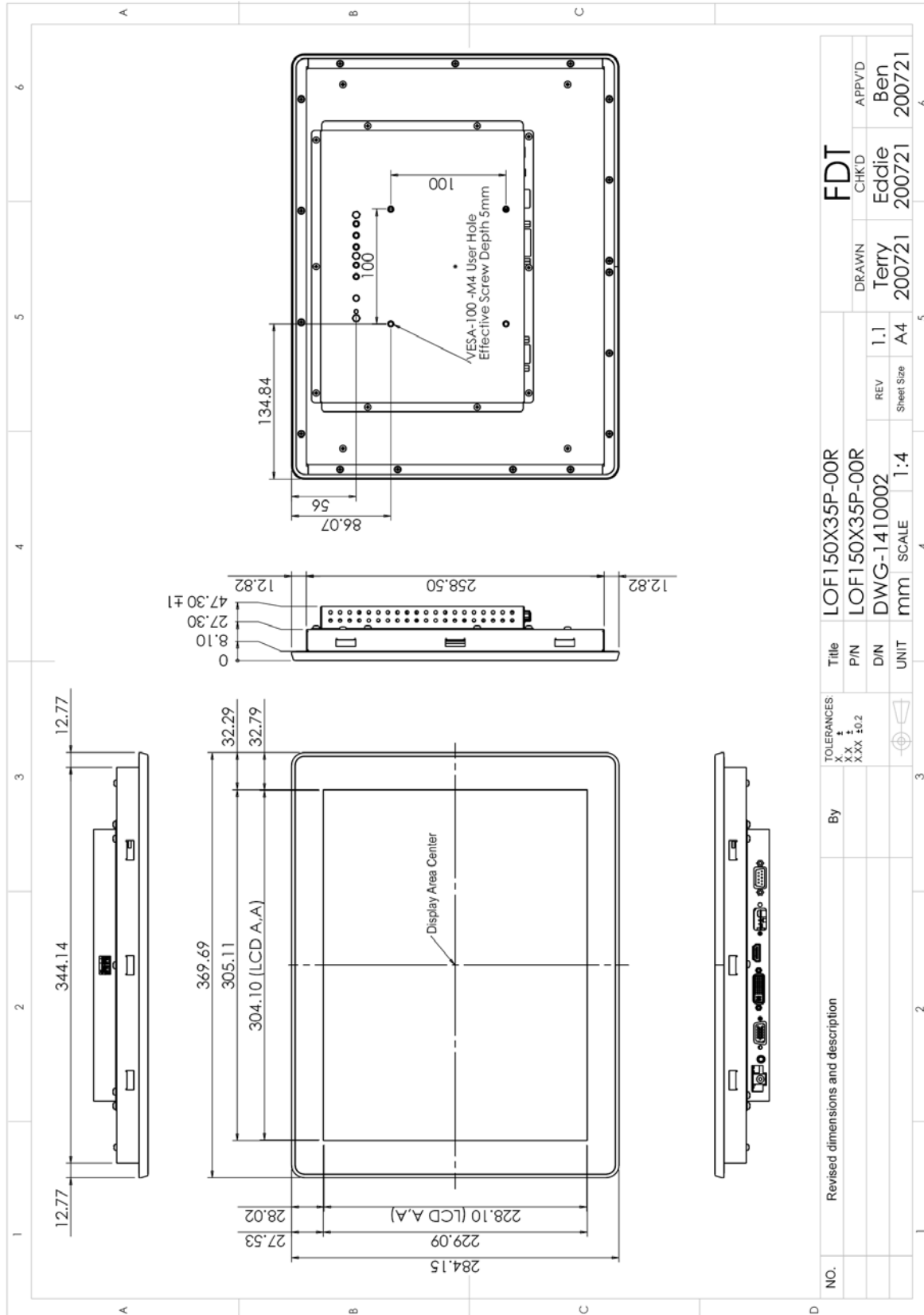
| Parameter              | LOF150X35P-00R             | LOF150X1DP-10R             | Unit | Remark |
|------------------------|----------------------------|----------------------------|------|--------|
| VGA                    | ⊙                          | ⊙                          |      |        |
| DVI                    | ⊙                          | ⊙                          |      |        |
| HDMI                   | ⊙                          | ⊙                          |      |        |
| Touch Panel Type       | Projected Capacitive Touch | Projected Capacitive Touch |      |        |
| Touch Screen Interface | USB                        | USB                        |      |        |
| Audio Amplifier        | ⊙                          | ⊙                          |      |        |
| Audio Line-In          | ⊙                          | ⊙                          |      |        |
| 5 Keys                 | ⊙                          | ⊙                          |      |        |
| Waterproof             | -                          | IP54                       |      |        |
| Condition              | Standard                   | Non-standard               |      |        |

■ Customized

| Function              | Item                                     |   | Remark                         |
|-----------------------|--|---|--------------------------------|
| Audio                 | Head Phone For HDMI (Output)             |   |                                |
| Serial Remote Control | RS232 (DB9)                              |   |                                |
| Power Input Connector | Terminal Socket 2P 5.08mm<br>(on Module) |  |                                |
|                       | Terminal plug 2P 5.08mm<br>( For Cable)  |  | Matching<br>Terminal<br>Socket |

**Note:** Special order condition will apply to non-standard items and pls contact salespersons in FDT.

## Dimension



## Accessories (Option)

Before you begin installing the Open Frame, please make sure that the following materials have been shipped:



- A. AC to DC Adapter (L:1500mm,100-240V<sub>AC</sub> 50-60Hz to +12V<sub>DC</sub> @ 3.3A,  $\phi$  2.1)
- B. Power Cord (L:1800mm, Plug Type B for USA)
- C. HDMI Cable (L:1800mm)
- D. DVI Cable (L:1800mm)
- E. VGA Cable (L:1800mm)
- F. USB Cable (L:1800mm)
- G. RS232 Cable (L:1800mm, Null Modem)
- H. AUDIO Cable (L:1800mm)
- I. Touch Screen Driver CD Disk / User Manual
- J. Speaker (2.5W @ 4 $\Omega$  L:400mm \*2 Pieces)
- K. Mount Clamp and Screw \*12 Pieces



# Revision History

| NO  | Date              | Description  | Page | Note |
|-----|-------------------|--|------|------|
| 0.0 | October 2, 2014   | · First draft (Tentative)  | 5    |      |
| 1.0 | February 13, 2020 | · Add Orientation Marks of The Viewing Angle   | 2    |      |
| 1.1 | November 4, 2020  | · Improve LCD's brightness & Contrast & View Angle & LED life time.                  | 2    |      |
|     |                   | · Modify Power Consumption.  | 2    |      |
| 1.2 | December 30, 2020 | · Add Customized & Power Input Connector<br>Cancel "Light Sensor" / Modify Ear phone | 3    |      |
|     |                   |  |      |      |
|     |                   |  |      |      |
|     |                   |  |      |      |
|     |                   |  |      |      |
|     |                   |  |      |      |
|     |                   |  |      |      |
|     |                   |  |      |      |
|     |                   |  |      |      |
|     |                   |  |      |      |
|     |                   |  |      |      |
|     |                   |  |      |      |
|     |                   |  |      |      |
|     |                   |  |      |      |
|     |                   |  |      |      |
|     |                   |  |      |      |
|     |                   |  |      |      |
|     |                   |  |      |      |
|     |                   |  |      |      |
|     |                   |  |      |      |
|     |                   |  |      |      |
|     |                   |  |      |      |
|     |                   |  |      |      |
|     |                   |  |      |      |