



FLAT DISPLAY TECHNOLOGY



This product is RoHS compliant

§ BRIEF SPECIFICATION §

FDT Tech Module No: **LOF150X050-30R**

Description: **15" Digital TFT-LCD Module**

SPEC No.: **SAS-1502004**

Version: **1.2**

Issue Date: **March 18, 2021**

※ This specification contains 6 pages including the cover and appendix.



Features

- Full Flat Panel Design
- 15" (1024x768) Digital TFT LCD
- Aspect Ratio: 4:3
- Input Signal VGA / DVI-D/ HDMI 1.3a
- Maximum Support Resolution 1920x1080
- Stereo Audio Amplifier, Output 2W@4Ω Speaker
- Audio Line-In
- 5 Key Buttons Control
- 8 Languages OSD Menu
- LED Backlight
- Single Operation Voltage +12V

Applications

- Industrial
- Medical Environment
- Instrument Display
- Kiosk
- Security
- Signage
- Office Electronics
- Home Application
- Educate Application

Specifications

LCD		Input Signal	
Panel Size	15"	VGA	D-Sub15
Resolution (Pixels)	1024x768	DVI	DVI-D
Color	16.7M	HDMI	1.3a
Luminance without PMMA	500 cd/m ²	Audio	
Luminance (PMMA)	450 cd/m ²	Amplifier	1W@8Ω / 2W@4Ω
Contrast Ratio	2500	Line-In	Stereo Input Phone Jack ϕ 3.5
View Angle	88(L) / 88(R) / 88(T) / 88(B)	Mechanical	
LED Life Time (Min.)	50K hours	Construction	Aluminum Front Bezel with Completely Covered PMMA and SECC steel chassis
Power Requirement		Mounting Type	Panel / VESA 100 x 100 Mount
Power Input (DC Jack 2.1 ϕ)	+12 Vdc	Environment	
Power Consumption@+12V	11.2 Watts (@Without Amplifier)	Temperature Range	Operating
Controls	Key		Storage
		Operating	-20~+70°C
Serial Remote Control	RS232 (Option)	High Temperature & High Humidity (Non-condensing)	Operating

Order Information

Unit

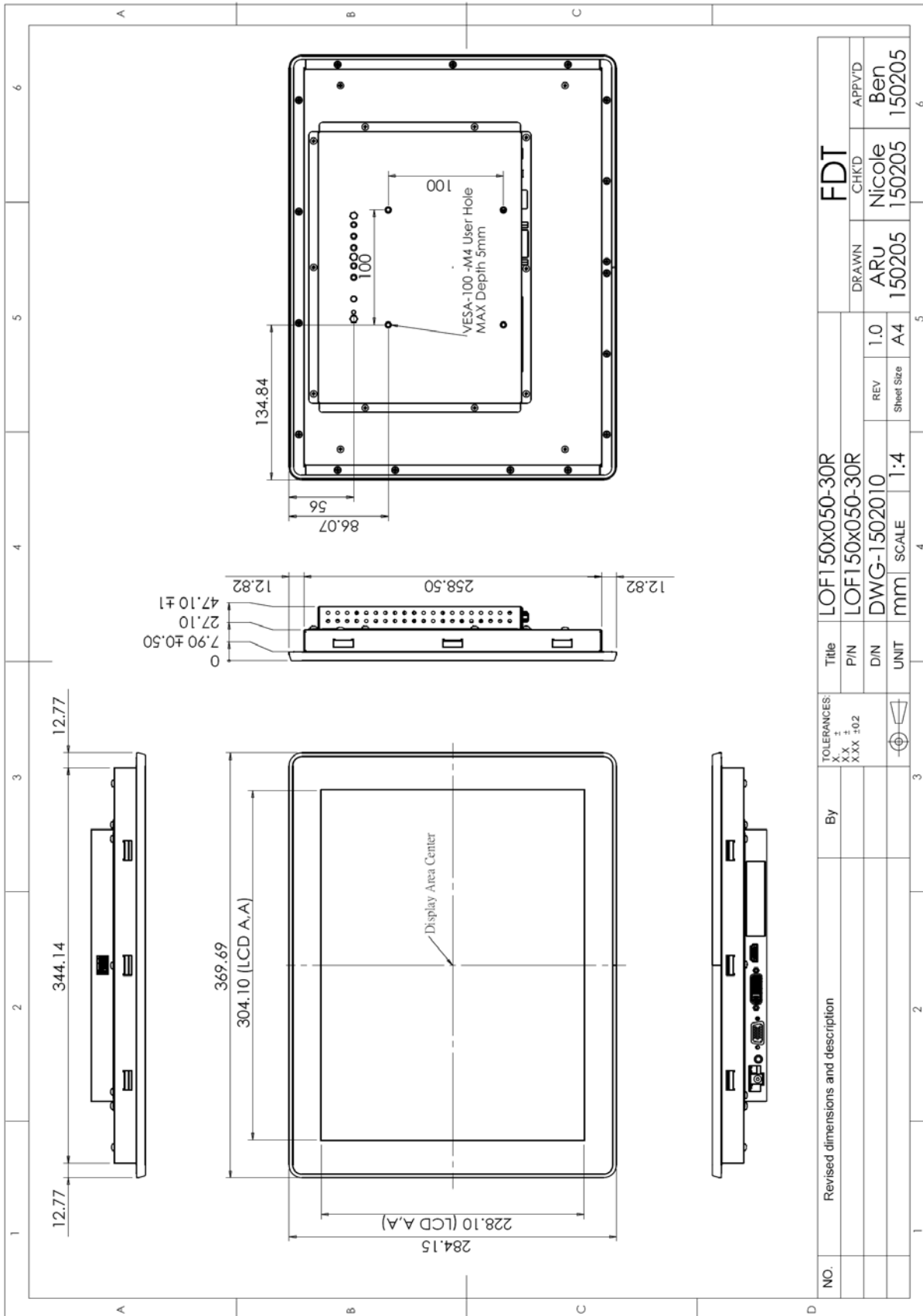
Item	LOF150X050-30R
VGA	⊙
DVI	⊙
HDMI	⊙
Audio Amplifier	⊙
Audio Line-In	⊙
5 Keys	⊙

Customized

Function	Item	Remark
Audio	Head Phone For HDMI (Output)	
Serial Remote Control	RS232 (DB9)	
Power Input Connector	Terminal Socket 2P 5.08mm (on Module)	
	Terminal plug 2P 5.08mm (For Cable)	 Matching Terminal Socket

Note: Special order condition will apply to non-standard items and pls contact salespersons in FDT.

Dimension



Accessories (Option)

Before you begin installing the Open Frame, please make sure that the following materials have been shipped:



A. LASTD12033-FDR



B. LAACD18000-FDR



C. LACABLE068-FDR



D. LACABLE069-FDR



E. LAVGA18000-FDR



F. LACABLE070-FDR



G. LASPKR0004-FDR



H. LASCW00003-FDR

- A. AC to DC Adapter (L:1500mm,100-240V_{AC} 50-60Hz to +12V_{DC} @ 3.3A, ϕ 2.1)
- B. Power Cord (L:1800mm, Plug Type B for USA)
- C. HDMI Cable (L:1800mm)
- D. DVI Cable (L:1800mm)
- E. VGA Cable (L:1800mm)
- F. AUDIO Cable (L:1800mm)
- G. Speaker (2.5W @ 4 Ω L:400mm *2 Pieces)
- H. Mount Clamp and Screw *12 Pieces



Revision History

NO	Date	Description	Page	Note
0.0	October 2, 2014	· First draft (Tentative)	5	
1.0	February 13, 2020	· Add Orientation Marks of The Viewing Angle	2	
1.1	November 6, 2020	· Improve LCD's brightness & Contrast & View Angle & LED life time.	2	
		· Modify Power Consumption	2	
1.2	December 31, 2020	· Add Customized & Power Input Connector Cancel "Light Sensor" / Modify Ear phone	2	
		· Modify Power Consumption 12W to 11.2W	2	