



FLAT DISPLAY TECHNOLOGY



This product is RoHS compliant

§ BRIEF SPECIFICATION §

FDT Tech Module No: **LOF121X15P-x0R**

Description: **12.1" Digital TFT- LCD Module**

SPEC No.: **SAS-1406004**

Version: **1.4**

Issue Date: **February 14, 2020**

※ This specification contains 5 pages including the cover and appendix.



Features

- Full Flat Panel Design
- 12.1" (1024x768) Digital TFT LCD
- Aspect Ratio: 4:3
- Input Signal VGA / DVI-D / HDMI 1.3a
- Maximum Support Resolution 1920x1080
- Stereo Audio Amplifier, Output 2W@4Ω Speaker
- Audio Line-In
- 2 Points Projected Capacitive Touch
- 5 Key Buttons Controls
- 8 Language OSD Menu
- LED Backlight
- Single Operation Voltage +12V

Applications

- Industrial
- Medical Environment
- Instrument Display
- Kiosk
- Security
- Signage
- Office Electronics
- Home Application
- Educate Application



Specifications

LCD	
Panel Size	12.1"
Resolution (Pixels)	1024x768
Color	16.2M
Luminance without RTP	500 cd/m ²
Luminance (PCAP)	425 cd/m ²
Contrast Ratio	700
View Angle	80(L) / 80(R) / 70(T) / 70(B)
LED Life Time	30K (Min)
Power Requirement	
Power Input (DC Jack 2.1 φ)	+12 Vdc
Power Consumption@+12V	9.6 Watts (@Without Amplifier)
Touch Screen	
PCAP Type	USB Interface (2 Points)
Projected Capacitive Touch Support OS	Windows / Linux

Input Signal		
VGA	D-Sub15	
DVI	DVI-D	
HDMI	1.3a	
Audio		
Amplifier	1W@8Ω / 2W@4Ω	
Line-In	Stereo Input Phone Jack φ 3.5	
Controls		
Key	5 Buttons	
Serial Remote Control	RS232 (Option)	
Mechanical		
Construction	Aluminum Front Bezel with Completely Covered Glass and SECC steel chassis	
Mounting Type	Panel / VESA 100 x 100 Mount	
Environment		
Temperature Range	Operating	-20~+70°C
	Storage	-30~+70°C
High Temperature & High Humidity (Non-condensing)	Operating	+40°C / 90%

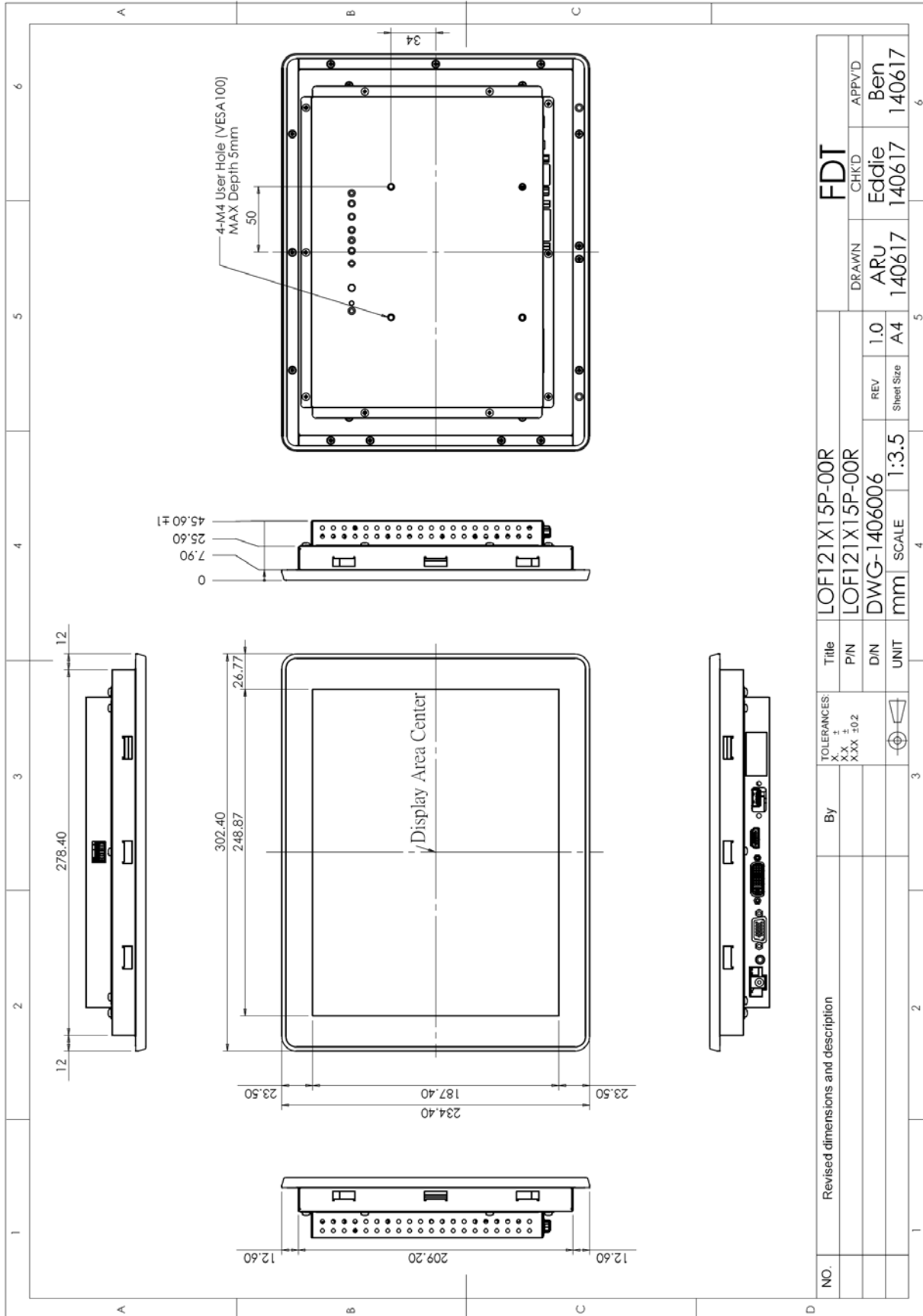
Order Information

Item	LOF121X15P-00R	LOF121X15P-10R
VGA	⊙	⊙
DVI	⊙	⊙
HDMI	⊙	⊙
Touch Panel Type	Projected Capacitive Touch	Projected Capacitive Touch
Touch Screen Interface	USB	USB
Audio Amplifier	⊙	⊙
Audio Line-In	⊙	⊙
5 Keys	⊙	⊙
Waterproof	-	IP54
Condition	Standard	Non-standard

Item	Condition
Ear Phone	Customized
RS232 Remote Control	
Light Sensor	

Note: Special order condition will apply to non-standard items and pls contact salespersons in FDT.

Dimension



Accessories (Option)

Before you begin installing the Open Frame, please make sure that the following materials have been shipped:



A. LASTD12033-FDR



B. LAACD18000-FDR



C. LACABLE068-FDR



D. LACABLE069-FDR



E. LAVGA18000-FDR



F. LAUSB18000-FDR



G. LACABLE070-FDR



H. LAVCD00002-FDR



I. LASPKR0004-FDR



J. LASCW00003-FDR

- A. AC to DC Adapter (L:1500mm,100-240V_{AC} 50-60Hz to +12V_{DC} @ 3.3A, ϕ 2.1)
- B. Power Cord (L:1800mm, Plug Type B for USA)
- C. HDMI Cable (L:1800mm)
- D. DVI Cable (L:1800mm)
- E. VGA Cable (L:1800mm)
- F. USB Cable (L:1800mm)
- G. AUDIO Cable (L:1800mm)
- H. Touch Screen Driver CD Disk / User Manual
- I. Speaker (2.5W @ 4 Ω L:400mm *2 Pieces)
- J. Mount Clamp and Screw *12 Pieces