



FLAT DISPLAY TECHNOLOGY



This product is RoHS compliant

## § BRIEF SPECIFICATION §

---

FDT Tech Module No: **LOF121X05x-30R**

---

Description: **12.1" Digital TFT- LCD Module**

---

SPEC No.: **SAS-1506001**

---

Version: **1.3**

---

Issue Date: **February 22, 2021**

---

※ This specification contains 6 pages including the cover and appendix.



## Features

- Full Flat Panel Design
- 12.1" (1024x768) Digital TFT LCD
- Aspect Ratio: 4:3
- Input Signal VGA / DVI-D / HDMI 1.3a
- Maximum Support Resolution 1920x1080
- Stereo Audio Amplifier, Output 2W@4Ω Speaker
- Audio Line-In
- 5 Wires Resistive Touch Panel
- 5 Key Buttons Controls
- 8 Languages OSD Menu
- LED Backlight
- Single Operation Voltage +12V

## Applications

- Industrial
- Medical Environment
- Instrument Display
- Kiosk
- Security
- Signage
- Office Electronics
- Home Application
- Educate Application



## Specifications

LCD	
Panel Size	12.1"
Resolution (Pixels)	1024x768
Color	16.2M
Luminance without Membrane+RTP	500 cd/m <sup>2</sup>
Luminance (Membrane+RTP)	360 cd/m <sup>2</sup>
Contrast Ratio	1000
View Angle	89(L) / 89(R) / 89(T) / 89(B)
LED Life Time (Min.)	30K hours
Power Requirement	
Power Input (DC Jack 2.1 $\phi$ )	+12 Vdc
Power Consumption@+12V	12 Watts (@Without Amplifier)
Touch Screen	
Resistive Type	USB / RS232 Interface
Resistive Type Support OS	Windows / Linux / DOS / Mac / QNX

Input Signal		
VGA	D-Sub15	
DVI	DVI-D	
HDMI	1.3a	
Audio		
Amplifier	1W@8 $\Omega$ / 2W@4 $\Omega$	
Line-In	Stereo Input Phone Jack $\phi$ 3.5	
Controls		
Key	5 Buttons	
Serial Remote Control	RS232 (Option)	
Mechanical		
Construction	Aluminum Front Bezel with Completely Covered Membrane and SECC steel chassis	
Mounting Type	Panel / VESA 100 x 100 Mount	
Environment		
Temperature Range	Operating	0~+50 $^{\circ}$ C
	Storage	-10~+60 $^{\circ}$ C
High Temperature & High Humidity (Non-condensing)	Operating	+40 $^{\circ}$ C / 85%

## Order Information

### ■ Unit

Item	LOF121X05U-30R	LOF121X05R-30R	Unit	Remark
VGA	⊙	⊙		
DVI	⊙	⊙		
HDMI	⊙	⊙		
Touch Panel Type	5W Resistive	5W Resistive		
Touch Screen Interface	USB	RS232		
Audio Amplifier	⊙	⊙		
Audio Line-In	⊙	⊙		
5 Keys	⊙	⊙		
Condition	Standard	Non-standard		

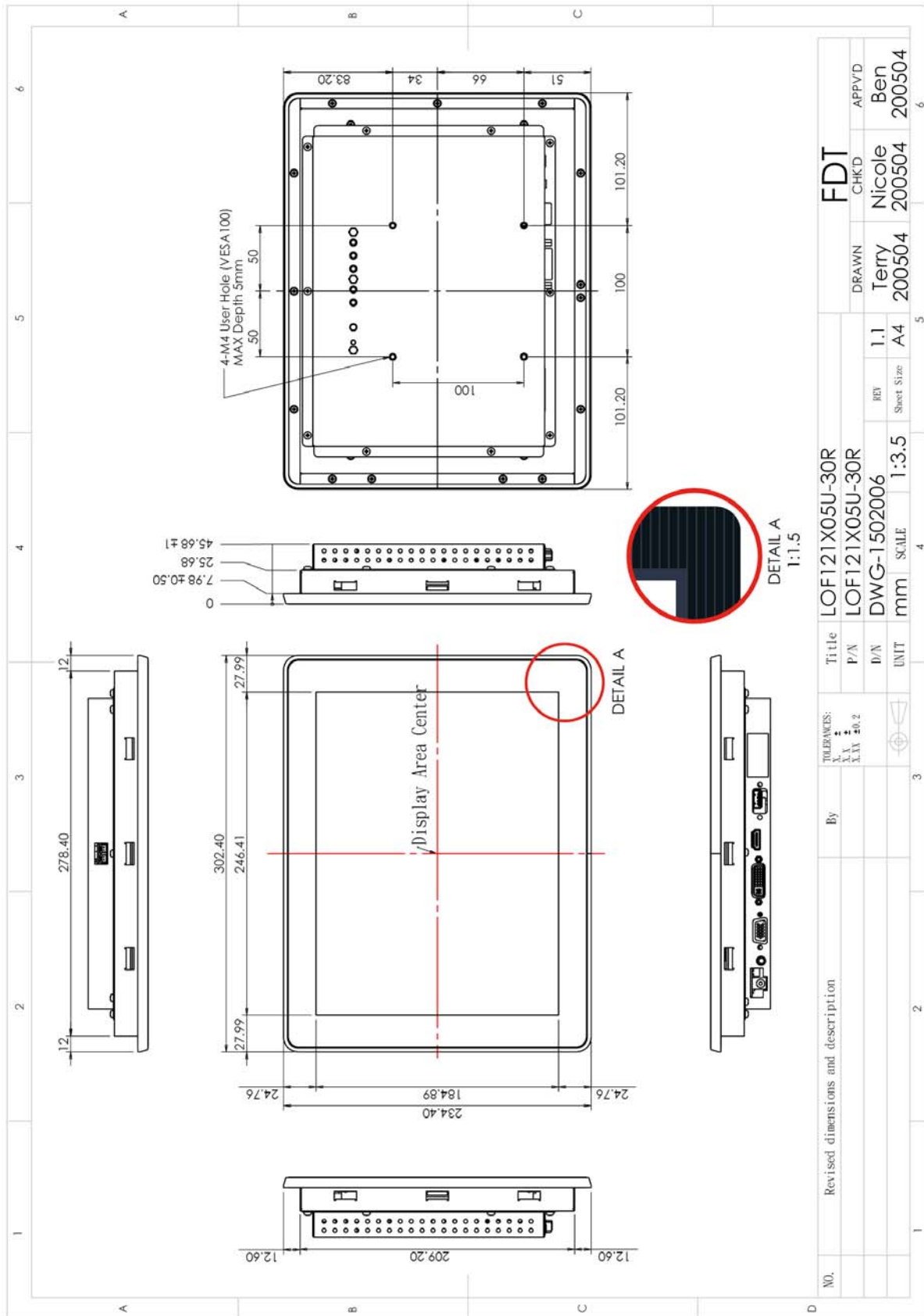
■ Customized

Function	Item		Remark
Audio	Head Phone For HDMI (Output)		
Serial Remote Control	RS232 (DB9)		
Power Input Connector	Terminal Socket 2P 5.08mm (on Module)		
	Terminal plug 2P 5.08mm ( For Cable)		Matching Terminal Socket

**Note: Special order condition will apply to non-standard items and pls contact salespersons in FDT.**



## Dimension



## Accessories (Option)

Before you begin installing the Open Frame, please make sure that the following materials have been shipped:



- A. AC to DC Adapter (L:1500mm,100-240V<sub>AC</sub> 50-60Hz to +12V<sub>DC</sub> @ 3.3A,  $\phi$  2.1)
- B. Power Cord (L:1800mm, Plug Type B for USA)
- C. HDMI Cable (L:1800mm)
- D. DVI Cable (L:1800mm)
- E. VGA Cable (L:1800mm)
- F. USB Cable (L:1800mm)
- G. RS232 Cable (L:1800mm, Null Modem)
- H. AUDIO Cable (L:1800mm)
- I. Touch Screen Driver CD Disk / User Manual
- J. Speaker (2.5W @ 4 $\Omega$  L:400mm \*2 Pieces)
- K. Mount Clamp and Screw \* 12 Pieces