



FLAT DISPLAY TECHNOLOGY



This product is RoHS compliant

§ BRIEF SPECIFICATION §

FDT Tech Module No: **LOF121X050-30R**

Description: **12.1" Digital TFT- LCD Module**

SPEC No.: **SAS-1502002**

Version: **1.3**

Issue Date: **February 22, 2021**

※ This specification contains 5 pages including the cover and appendix.



Features

- Full Flat Panel Design
- 12.1" (1024x768) Digital TFT LCD
- Aspect Ratio: 4:3
- Input Signal VGA / DVI-D / HDMI 1.3a
- Maximum Support Resolution 1920x1080
- Stereo Audio Amplifier, Output 2W@4Ω Speaker
- Audio Line-In
- 5 Key Buttons Controls
- 8 Languages OSD Menu
- LED Backlight
- Single Operation Voltage +12V

Applications

- Industrial
- Medical Environment
- Instrument Display
- Kiosk
- Security
- Signage
- Office Electronics
- Home Application
- Educate Application

Specifications

LCD	
Panel Size	12.1"
Resolution (Pixels)	1024x768
Color	16.2M
Luminance without PMMA	500 cd/m ²
Luminance (PMMA)	450 cd/m ²
Contrast Ratio	1000
View Angle	89(L) / 89(R) / 89(T) / 89(B)
LED Life Time (Min.)	30K hours
Power Requirement	
Power Input (DC Jack 2.1 φ)	+12 Vdc
Power Consumption@+12V	11.52 Watts (@Without Amplifier)
Controls	
Key	5 Buttons
Serial Remote Control	RS232 (Option)

Input Signal		
VGA	D-Sub15	
DVI	DVI-D	
HDMI	1.3a	
Audio		
Amplifier	1W@8Ω / 2W@4Ω	
Line-In	Stereo Input Phone Jack φ 3.5	
Mechanical		
Construction	Aluminum Front Bezel with Completely Covered PMMA and SECC steel chassis	
Mounting Type	Panel / VESA 100 x 100 Mount	
Environment		
Temperature Range	Operating	-10~+60°C
	Storage	-20~+70°C
High Temperature & High Humidity (Non-condensing)	Operating	+40°C / 85%

Order Information

■ Unit

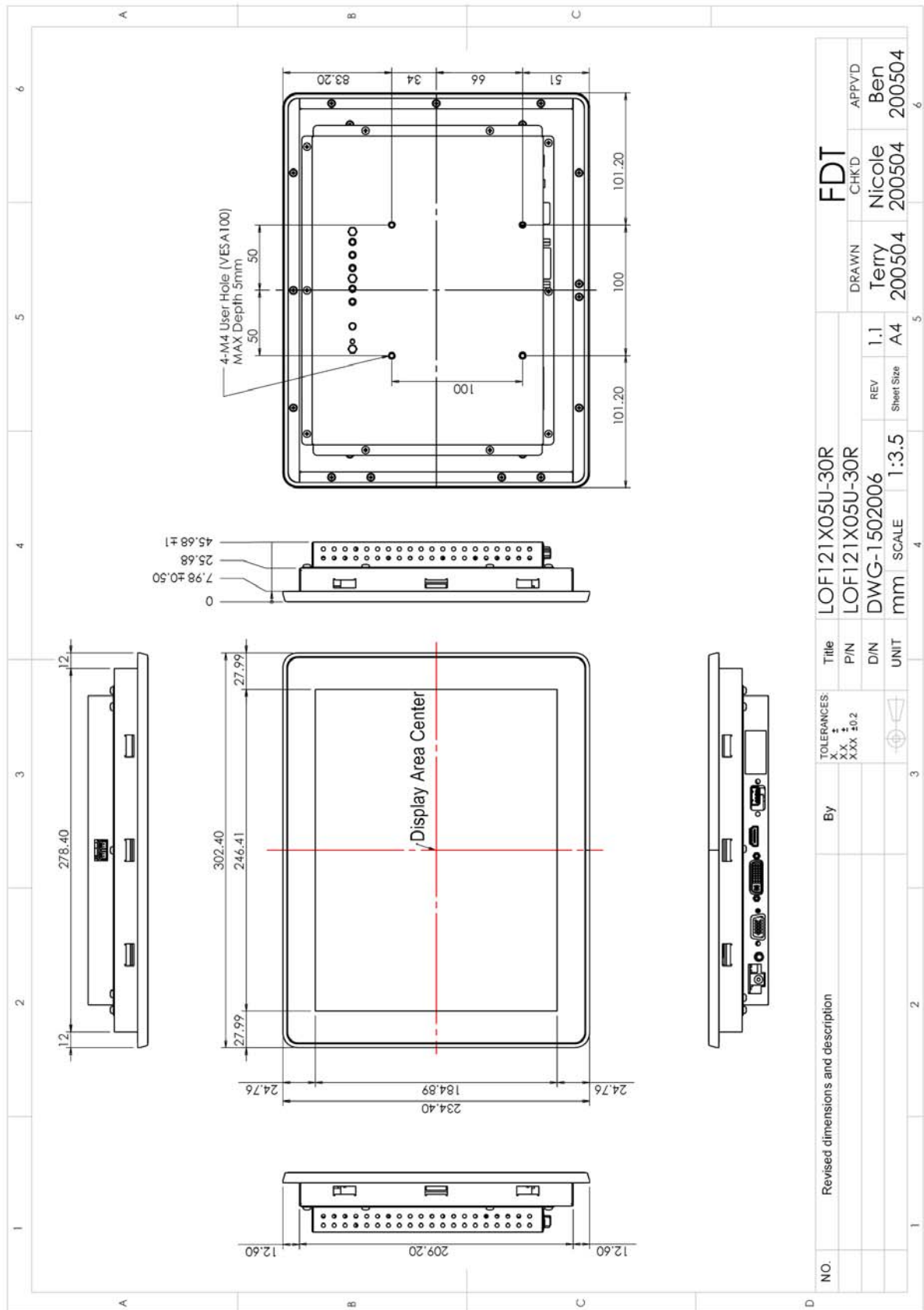
Item	LOF121X050-30R
VGA	⊙
DVI	⊙
HDMI	⊙
Audio Amplifier	⊙
Audio Line-In	⊙
5 Keys	⊙

■ Customized

Function	Item	Remark
Audio	Head Phone For HDMI (Output)	
Serial Remote Control	RS232 (DB9)	
Power Input Connector	Terminal Socket 2P 5.08mm (on Module)	
	Terminal plug 2P 5.08mm (For Cable)	 Matching Terminal Socket

Note: Special order condition will apply to non-standard items and pls contact salespersons in FDT.

Dimension



Accessories (Option)

Before you begin installing the Open Frame, please make sure that the following materials have been shipped:



A. LASTD12033-FDR



B. LAACD18000-FDR



C. LACABLE068-FDR



D. LACABLE069-FDR



E. LAVGA18000-FDR



F. LACABLE070-FDR



G. LASPKR0004-FDR



H. LASCW00003-FDR

- A. AC to DC Adapter (L:1500mm,100-240V_{AC} 50-60Hz to +12V_{DC} @ 3.3A, ϕ 2.1)
- B. Power Cord (L:1800mm, Plug Type B for USA)
- C. HDMI Cable (L:1800mm)
- D. DVI Cable (L:1800mm)
- E. VGA Cable (L:1800mm)
- F. AUDIO Cable (L:1800mm)
- G. Speaker (2.5W @ 4 Ω L:400mm *2 Pieces)
- H. Mount Clamp and Screw *12 Pieces