



§ BRIEF SPECIFICATION §

FDT Tech Module No: **LOF101GF7P-80R**

Description: **10.1" Digital TFT-LCD Module**

SPEC No.: **SAS-2106001**

Version: **0.0**

Issue Date: **June 22, 2021**

※ This specification contains 5 pages including the cover and appendix.



Features

- 10.1" (1280x800) Digital TFT LCD
- Aspect Ratio: 16:10
- Input Signal VGA / HDMI 1.3a
- Maximum Support Resolution 1920x1080
- Headphone Driver, 46mW@32Ω
- 10 Points Projected Capacitive Touch
- 5 Key Buttons Controls
- 9 Language OSD Menu
- LED Backlight
- Single Operation Voltage +12V

Applications

- Industrial
- Medical Environment
- Instrument Display
- Kiosk
- Security
- Signage
- Office Electronics
- Home Application
- Educate Application

Specifications

LCD	
Panel Size	10.1"
Resolution (Pixels)	1280x800
Color	16.7M
Luminance	255 cd/m ²
Contrast Ratio	800
View Angle	85(L) / 85(R) / 85(T) / 85(B)
LED Life Time (Min.)	20K hours
Power Requirement	
Power Input (DC Jack 2.1 ϕ)	+12 V _{DC}
Power Consumption	6.12 W
Touch Screen	
PCAP Type	USB Interface (10 Points)
Resistive Type Support OS	Windows / Linux / DOS / Mac / QNX
Projected Capacitive Touch Support OS	Windows / Linux

Input Signal		
VGA	D-Sub15	
HDMI	1.3a	
Audio		
Headphone Driver (Line In & out)	46mW@32 Ω Phone Jack ϕ 3.5	
Mechanical		
Construction	Aluminum Front Bezel with Completely Covered Glass and SECC steel chassis	
Mounting Type	Panel / VESA 75 x 75 Mount	
Environment		
Temperature Range	Operating	0 ~ +50 $^{\circ}$ C
	Storage	-20 ~ +60 $^{\circ}$ C
High Temperature & High Humidity (Non-condensing)	Operating	+40 $^{\circ}$ C / 90%

Order Information

■ Unit

Item	LOF101GF7P-80R
VGA	⊙
HDMI	⊙
Touch Panel Type	Projected Capacitive Touch
Touch Screen Interface	USB
Headphone Driver (Line In & out)	⊙
5 Keys	⊙
Dimensions	250.26 x 168.90 x 26.7
Weight	786
Condition	Standard

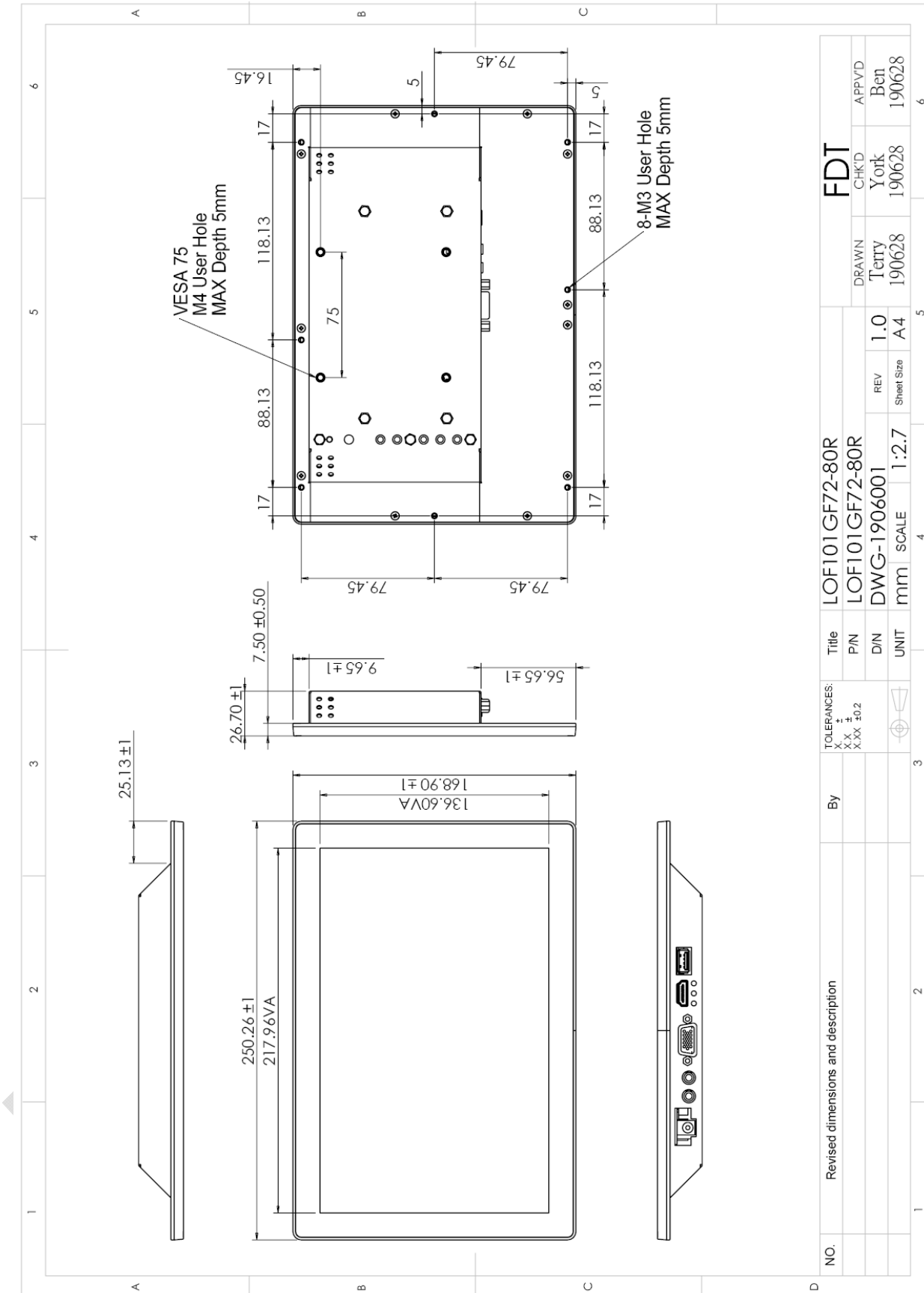
Note: 1. The assembling of panel and bracket is aimed for delivery, packaging and experiment. If the demand of shockproof and long-term fix, pls. have it into consideration of mechanism design.

■ Customized

Function	Item
Serial Remote Control	RS232 (DB9)
External Key	5 keys

Note: Special order condition will apply to non-standard items and pls. contact salespersons in FDT.

Dimension



NO.	Revised dimensions and description	By	Title	LOF101 GF72-80R	Scale	1:2.7	REV	1.0	Sheet Size	A4	DRAWN	Terry	190628	CHK'D	York	190628	APP'VD	Ben	190628
			P/N	LOF101GF72-80R	UNIT	mm	D/N	DWG-1906001											
			TOLERANCES:	X.X ±			X.XX ±0.2												

Accessories (Option)

Before you begin installing the Open Frame, please make sure that the following materials have been shipped:



A. LASTD12033-FDR



B. LAACD18000-FDR



C. LACABLE068-FDR



D. LAVGA18000-FDR



E. LAUSB18000-FDR



F. LACABLE070-FDR



G. LAVCD00002-FDR

- A. AC to DC Adapter (L:1500mm,100-240V_{AC} 50-60Hz to +12V_{DC} @ 3.3A, ϕ 2.1)
- B. Power Cord (L:1800mm, Plug Type B for USA)
- C. HDMI Cable (L:1800mm)
- D. VGA Cable (L:1800mm)
- E. USB Cable (L:1800mm)
- F. AUDIO Cable (L:1800mm)
- G. Touch Screen Driver CD Disk / User Manual