



RAYSTAR

曜凌光電股份有限公司

Web: www.raystar-optronics.com E-mail: sales@raystar-optronics.com

RFS390A-AIW-DNS

SPECIFICATION

General Specifications

- Size: 3.9 inch
- Dot Matrix: 480 x RGB x 128(TFT) dots
- Module dimension: 105.5(W) x 40.64(H) x 4.45(D) mm
- Active area: 95.04 x 25.34 mm
- Dot pitch: 0.066(W) x 0.198(H) mm
- LCD type: TFT, Normally White, Transmissive
- View Direction: 12 o'clock
- Gray Scale Inversion Direction: 6 o'clock
- Aspect Ratio: Bar Type
- Backlight Type: LED, Normally White
- With /Without TP: With RTP
- Surface: Anti-Glare

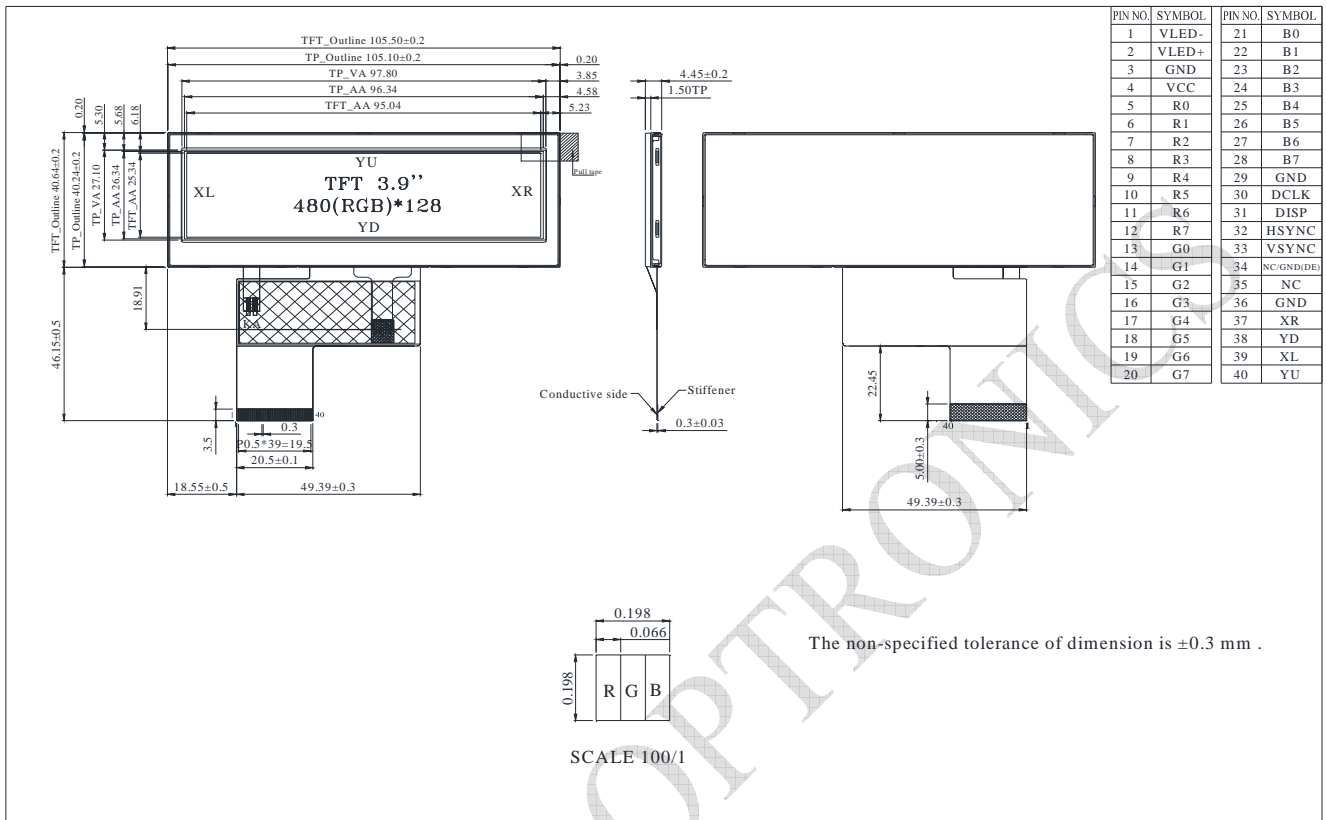
*Color tone slight changed by temperature and driving voltage.

Interface

LCM PIN Definition

No.	Symbol	Description
1	VLED-	Backlight LED Cathode
2	VLED+	Backlight LED Anode.
3	GND	System Ground
4	VCC	Power supply for logic operation
5~12	R0~R7	Data bus
13~20	G0~G7	Data bus
21~28	B0~B7	Data bus
29	GND	System Ground
30	DCLK	Pixel clock signal
31	DISP	Display on/off control
32	HSYNC	Horizontal Sync signal
33	VSYNC	Vrtical Sync signal
34	NC/GND (DE)	No connection, or pulled weak low (option Data Enable,DE mode usde)
35	NC	No connection
36	GND	System Ground
37	XR	Right electrode
38	YD	Bottom electrode
39	XL	Left electrode
40	YU	Top electrode

Contour Drawing



Absolute Maximum Ratings

Item	Symbol	Min	Typ	Max	Unit
Operating Temperature	TOP	-20	—	+70	°C
Storage Temperature	TST	-30	—	+80	°C

Electrical Characteristics

Operating conditions

Item	Symbol	Condition	Min	Typ	Max	Unit
Supply Voltage For LCM	VCC	—	3.0	3.3	3.6	V
Supply Current For LCM	ICC	—	—	11	20	mA

LED driving conditions

Item	Symbol	Min	Typ	Max	Unit
Forward Current	ILED	36	40	50	mA
Forward Voltage	VLED+	14	-	16.5	V
Backlight life time		-	25000	-	hr