



曜凌光電股份有限公司

Web: www.raystar-optronics.com E-mail: sales@raystar-optronics.com

RFC570M-EIW-DRS

SPECIFICATION

General Specifications

- Size: 5.7 inch
- Dot Matrix: 320 x RGBx240(TFT)
- Module dimension: 141.12(W) x 101.55(H) x 15.0 (D) mm
- Active area: 115.2 x 86.4 mm
- Dot pitch: 0.12 x 0.36 mm
- LCD type: TFT, Normally White, Transmissive
- View Direction: 12 o'clock
- Gray Scale Inversion Direction: 6 o'clock
- Aspect Ratio:4:3
- Backlight Type: LED,Normally White
- Interface: Uart 19200 Baud rate/SPI
- With /Without TP: With RTP
- Surface: Anti-Glare

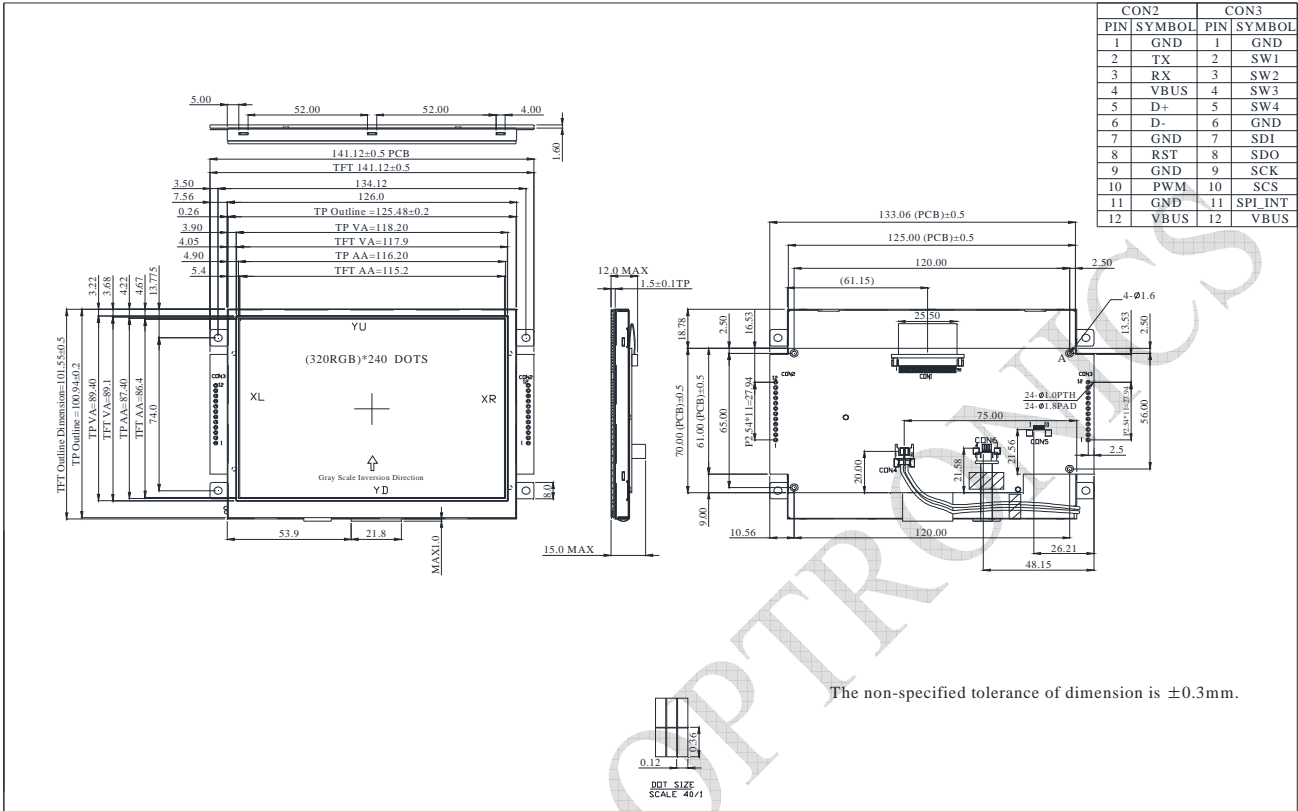
*Color tone slight changed by temperature and driving voltage

Interface

| CON 2 | | | |
|-------|--------|--------------|------------------------|
| Pin | Symbol | I/O | Function |
| 1 | GND | Power Supply | Power Ground |
| 2 | TX | O | Uart Transmit pin |
| 3 | RX | I | Uart Receive pin |
| 4 | VBUS | Power Supply | Power supply : 5V |
| 5 | D+ | I/O | USB Data + |
| 6 | D- | I/O | USB Data - |
| 7 | GND | Power Supply | Power Ground |
| 8 | /REST | I | Reset (active Low) |
| 9 | GND | Power Supply | Power Ground |
| 10 | PWM | O | Pulse width modulation |
| 11 | GND | Power Supply | Power Ground |
| 12 | VBUS | Power Supply | Power supply : 5V |

| CON 3 | | | |
|-------|---------|--------------|----------------------------------|
| Pin | Symbol | I/O | Function |
| 1 | GND | Power Supply | Power Ground |
| 2 | SW1 | I | Switch (active low) |
| 3 | SW2 | I | Switch (active low) |
| 4 | SW3 | I | Switch (active low) |
| 5 | SW4 | I | Switch (active low) |
| 6 | GND | Power Supply | Power Ground |
| 7 | SDI | O | Master Input Slave Output (MISO) |
| 8 | SDO | I | Master Output Slave Input (MOSI) |
| 9 | SCK | I | Serial Clock |
| 10 | CS | I | Serial Chip selection |
| 11 | SPI_INT | O | Serial Interrupt |
| 12 | VBUS | Power Supply | Power supply : 5V |

Contour Drawing



Absolute Maximum Ratings

| Item | Symbol | Min | Typ | Max | Unit |
|-----------------------|--------|-----|-----|-----|------|
| Operating Temperature | TOP | -20 | — | +70 | °C |
| Storage Temperature | TST | -30 | — | +80 | °C |

Electrical Characteristics

Operating conditions

| Item | Symbol | Condition | Min | Typ | Max | Unit |
|------------------------|--------|-----------|-----|------|-----|------|
| Supply Voltage For LCM | VDD | — | 4.5 | 5 | 5.5 | V |
| Supply Current For LCM | IDD | — | — | 521 | — | mA |
| Power Consumption | — | VDD=5V | — | 2605 | — | mW |

LED driving conditions

| Parameter | Symbol | Min. | Typ. | Max. | Unit |
|-------------------|--------|------|--------|------|------|
| LED current | | - | 140 | - | mA |
| Power Consumption | | 1260 | - | 1470 | mW |
| LED voltage | VBL+ | 9.0 | - | 10.5 | V |
| LED Life Time | | - | 50,000 | - | Hr |