



RAYSTAR

曜凌光電股份有限公司

Web: www.raystar-optronics.com E-mail: sales@raystar-optronics.com

RFC350L-AIW-DNN

SPECIFICATION

General Specifications

- Size: 3.5 inch
- Dot Matrix: 320 x RGB x 240(TFT) dots
- Module dimension: 76.84(W) x 63.84(H) x 3.27(D) mm
- Active area: 70.08 x 52.56 mm
- Dot pitch: 0.073 x 0.219 mm
- LCD type: TFT, Normally White, Transmissive
- View Direction: 12 o'clock
- Gray Scale Inversion Direction: 6 o'clock
- Aspect Ratio: 4:3
- Backlight Type: LED, Normally White
- With /Without TP: Without TP
- Surface: Anti-Glare

*Color tone slight changed by temperature and driving voltage.

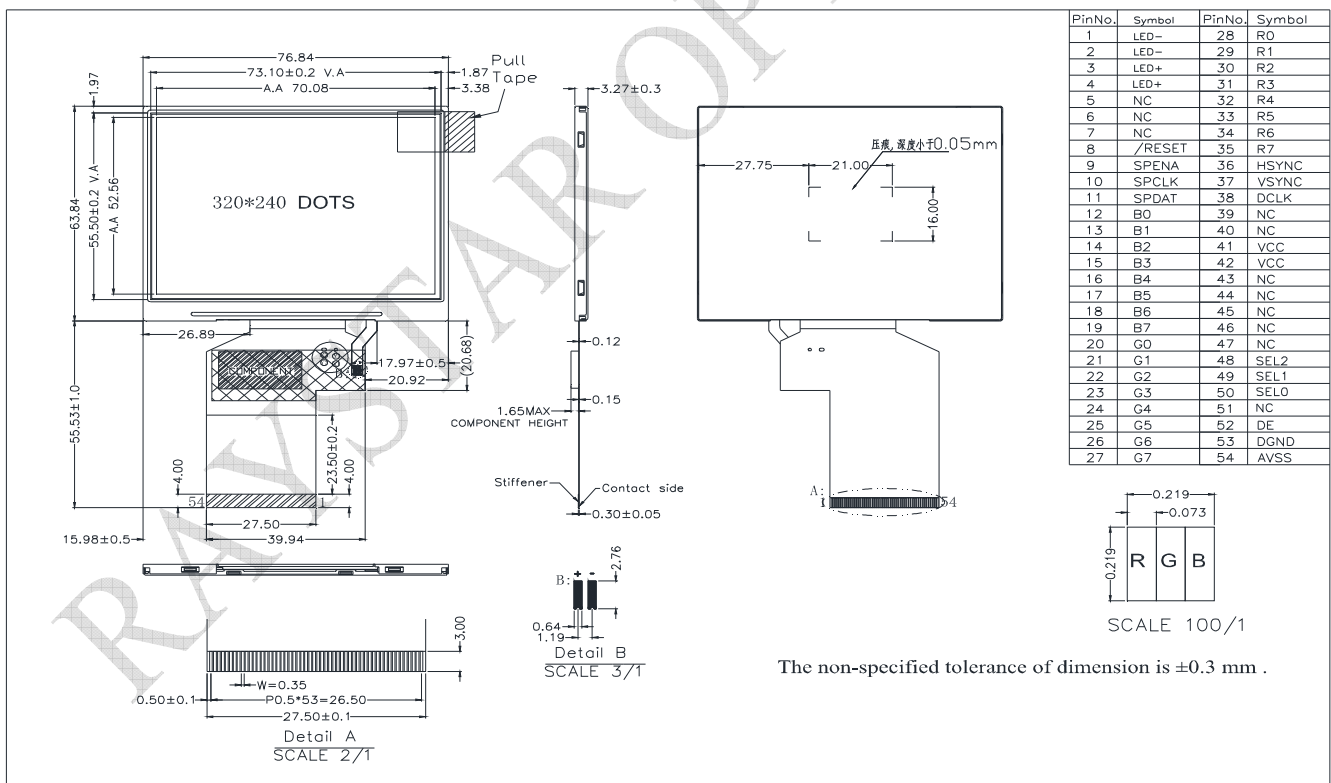
Interface

LCM PIN Definition

Pin	Symbol	Function
1	LED-	Power for LED backlight cathode
2	LED-	Power for LED backlight cathode
3	LED+	Power for LED backlight anode
4	LED+	Power for LED backlight anode
5	NC	No connect
6	NC	No connect
7	NC	No connect
8	/RESET	Hardware reset
9	SPENA	Chip select pin of serial interface
10	SPCLK	Clock pin of serial interface
11	SPDAT	Data input pin in serial mode
12	B0	Data bus
13	B1	Data bus
14	B2	Data bus
15	B3	Data bus
16	B4	Data bus
17	B5	Data bus
18	B6	Data bus
19	B7	Data bus
20	G0	Data bus
21	G1	Data bus
22	G2	Data bus
23	G3	Data bus
24	G4	Data bus
25	G5	Data bus
26	G6	Data bus
27	G7	Data bus
28	R0	Data bus
29	R1	Data bus
30	R2	Data bus
31	R3	Data bus
32	R4	Data bus
33	R5	Data bus
34	R6	Data bus
35	R7	Data bus
36	HSYNC	Line synchronization signal
37	VSYNC	Frame synchronization signal
38	DCLK	Dot-clock signal and oscillator source
39	NC	No connect
40	NC	No connect
41	VCC	Power Supply

42	VCC	Power Supply
43	NC	No connect
44	NC	No connect
45	NC	No connect
46	NC	No connect
47	NC	No connect
48	SEL2	Input pin to select input interface mode
49	SEL1	Input pin to select input interface mode
50	SEL0	Input pin to select input interface mode
51	NC	No connect
52	DE	Display enable pin from controller. Internal pull high Connect to VCCIO or floating if not used
53	DGND	System ground pin of the IC. Connect to system ground.
54	AVSS	Grounding for analog circuit -Connect to system ground

Contour Drawing



Absolute Maximum Ratings

Item	Symbol	Min	Typ	Max	Unit
Operating Temperature	TOP	-20	—	+70	°C
Storage Temperature	TST	-30	—	+80	°C

Electrical Characteristics

Operating conditions

Item	Symbol	Condition	Min	Typ	Max	Unit
Supply Voltage For LCM	VCC	—	3.0	3.3	3.6	V
Supply Current For LCM	ICC	—	—	8.6	15	mA

LED driving conditions

Parameter	Symbol	Min	Typ	Max	Unit
LED current		—	20	—	mA
Power Consumption		348	384	408	mW
LED voltage	LED+	17.4	19.2	20.4	V
LED Life Time		—	50,000	—	Hr